



Unboxing - Assembly - Preparation & Use

The Beauty Bath Personal Hygiene System is an accessory for delivering a waterless body cleansing when mobility or bathing facilities do not allow for a normal bathtub or standing shower cleaning.

A Beauty Bath Personal Hygiene System combines four (4) components:

1. a container to hold enough waterless, no rinsing required, cleaning soap for a full body wash.
2. a warming base that warms the temperature of the cleansing soap to a safe and comfortable 50°C (110°F).
3. a hose to transfer the warm soap from the glass storage container to a spray nozzle that directs a warm stream of liquid soap onto the skin or hair so that you can wash away the dirt or grime.

Please read this manual before using the Beauty Bath Personal Hygiene System as this User Manual contains important information to ensure the safety and integrity of the patient, the user and the equipment. We recommend keeping this manual near to the device for future reference.

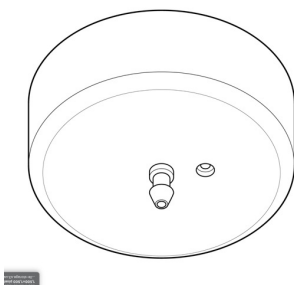
BEAUTY BATH **does not and will not accept responsibility** for any personal injury, property damage or loss or damage to the device or any of its components, disposables or third party products used herewith due to improper assembly, improper use, lack of maintenance or unauthorized modifications. No other warranties or guarantees are given or implied except for those expressly stated in this User Manual.

First Steps

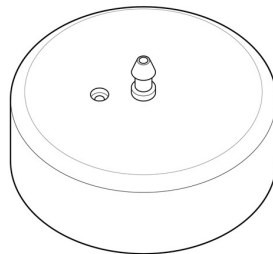
Take a moment to **inspect the exterior of the retail box** for any obvious and significant damage such as holes, cuts or damaged corners or for a pre-opened box. If any damage is discovered, take pictures to send to your local Beauty Bath dealer or directly to Beauty Bath LLC.

Open the box and remove the components and lay them on a flat surface, such as a table, bed, etc. **Inspect each component part** for obvious damage such as breakage or manufacturing defects. If any damage is discovered, take pictures to send to your local Beauty Bath dealer or directly to Beauty Bath LLC.

Assemble the Hose Cap: Holding the single component hose cap in your hand turn the cap upside down and attach the short hose. *The hose will have a slightly larger filter on the bottom of the hose and the plain hose on the other end.* Attach the plain end of the hose to the hose post on the inside bottom of the cap and push it onto the hose post until it is securely in place.



After attaching the hose turn the cap upright.



Wipe the hose with a clean cloth or alcohol wipe to remove any remaining dirt or contaminants.

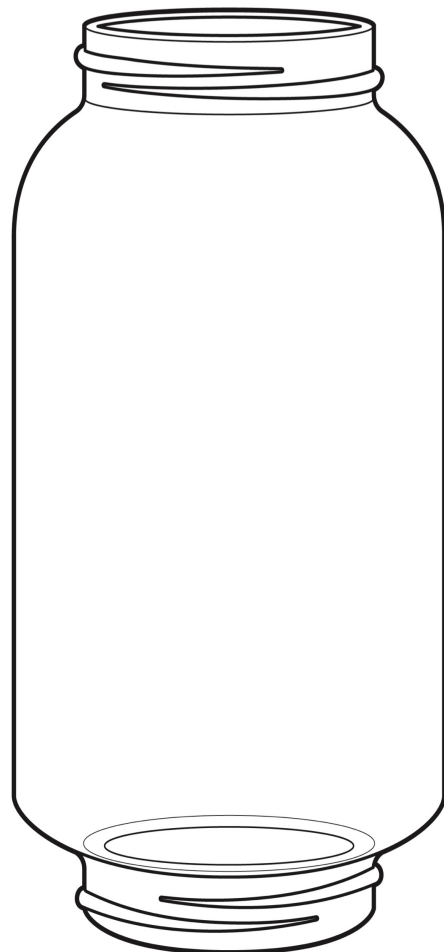
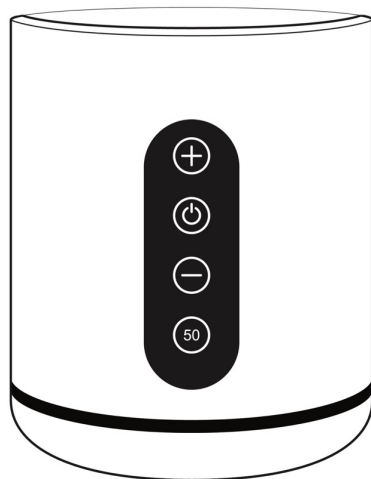
Assemble the Warming Base and Glass Storage Bottle

Remove any residual wrappings from the warming base and glass storage bottle. Wipe the inside bottom of the warming base with a damp cloth or alcohol wipe to remove any remaining dirt or contaminants.

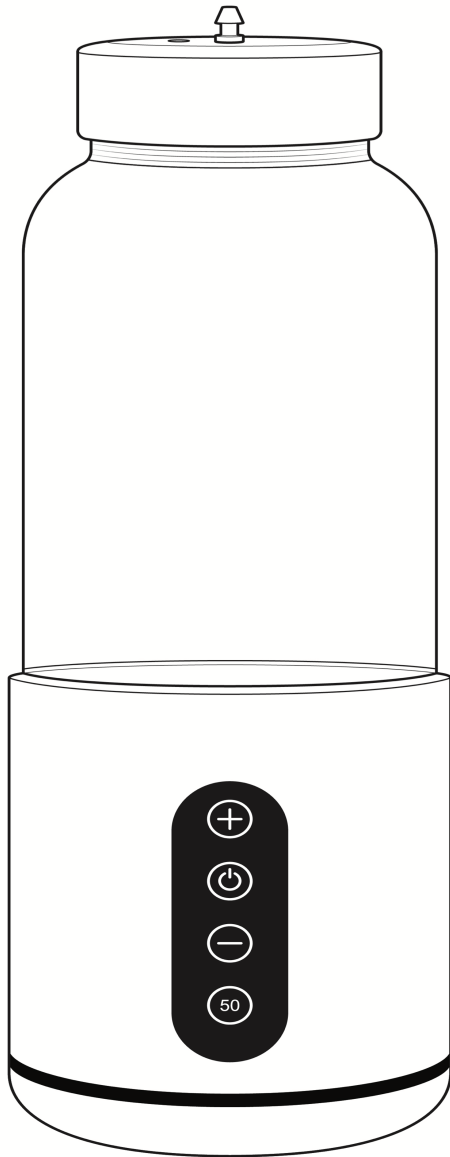
Wipe the inside of the glass storage bottle with a clean damp cloth or alcohol wipe to remove any remaining dirt or contaminants. Take special care to wipe these components as directed as they will come in contact with the liquid soap and must be free from dirt, contaminants and bacteria.

The glass bottle has two open ends, one end opening is larger than the other. Look closely to identify which end has the larger opening. *Place the larger opening of the glass storage bottle into the warming base and turn clockwise to screw them together.*

Tighten until secure but **DO NOT OVER TIGHTEN** as you risk cracking or breaking the glass. If the joint leaks when it is filled with liquid the glass can gently be turned clockwise to better seal the bottom of the glass bottle to the seal in the base



With the glass storage bottle and warming base secure you can attach the hose cap. A properly completed assembly will look like this.



Hose Cap

Glass Storage Bottle

Warming Base

Remove the hose cap, fill the glass storage bottle with water up to 70% full, replace the hose cap and shake the bottle gently to check for any leaks. Gently screw the glass storage bottle and warming base together to seal any leaks.

FINAL ASSEMBLY

The Spray Handle will already have a hose attached to the bottom of the handle. Do not attempt to remove the hose at this place as it was permanently attached at the factory.

Attach the loose end of the hose from the spray handle to the hose fitting on the top of the hose cap on the glass storage bottle.



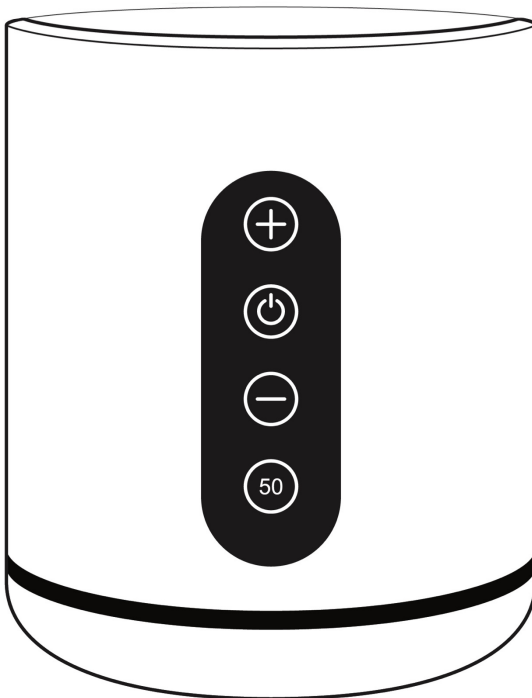
The system is now completely assembled and ready to use.

QUICK START - OPERATION

Two system components have integrated operating controls - the warming base and the power spray nozzle.

Warming Base:

1. Push the On/Off button to turn on the warming base power. The current battery volume will appear in the bottom screen.
2. Push the + or - button to increase or decrease the desired temperature for the cleaning agent (soap).
3. When the desired temperature of the cleansing agent (soap) is achieved the heating circuit will automatically shut off and the temperature of the liquid will show in the display screen.



Push + Button to Increase the desired Temperature

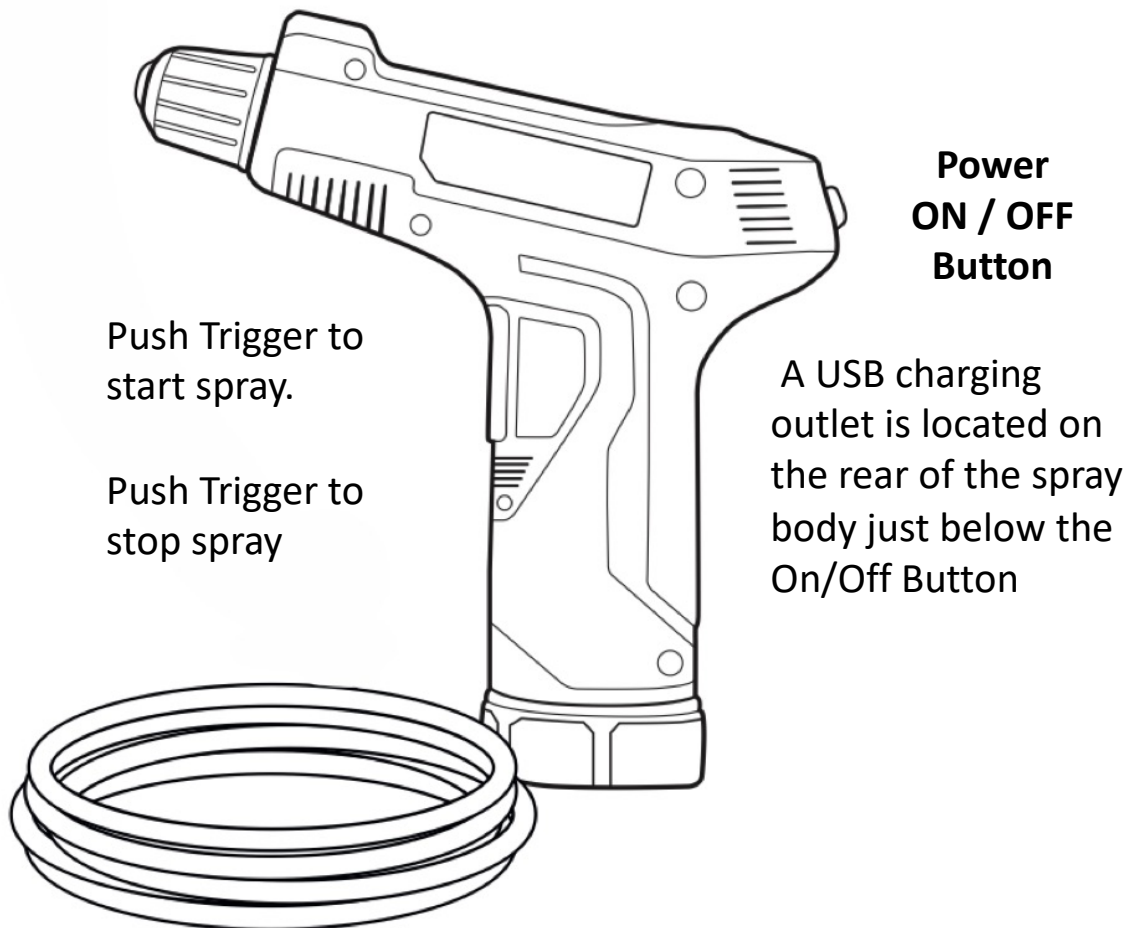
ON / OFF Button

Push - Button to Decrease the desired Temperature

A USB charging outlet is located on the rear of the warming base

Spray Nozzle

1. Push the On/Off power button on the rear of the nozzle housing to turn on the spray nozzle power.
2. Pull the trigger and release to **START** the spray.
3. Pull the trigger and release to **STOP** the spray.
4. Attach the loose end of the hose to the top hose fitting on the warming



CAUTIONS and WARNINGS

CAUTION: Do not over fill the glass bottle. 80% is about right because the liquid will expand as it warms and the expanded volume could cause the bottle to overflow if there is no space in the glass bottle for expansion.

WARNING: When recharging the warming base and spray nozzle be sure to use only grounded electrical outlets. **DO NOT** recharge or leave the devices plugged into an electrical outlet when also handling liquids as an electrical short may occur and cause electrical shock to the attendant or patient.

WARNING: It is essential to clean the glass bottle and base after each single use or at the end of each day to avoid possible contamination of the devices and the cleansing agents and soaps.

ADVISORY: It is best to clean the glass bottle and warming base before using as intentional or accidental contamination may have occurred while the devices were in storage. A mild soap and rinsing or wiping with an alcohol wipe is the recommended cleaning methods.

CAUTION: If a product is dropped on a hard floor or similar surface it is best to stop using that device until it can be examined for damage.

ADVISORY: Depending on the location and ambient temperatures where the bathing will be done the warming times for the warming base and cleansing agents can vary greatly. Consider your environment and allow time for proper warming of the cleansing agents or soaps.

ADVISORY: Your local Beauty Bath distributor or Beauty Bath LLC access is available if you have any questions about the use of the Beauty Bath Personal Hygiene system or device components; or if repairs or replacements are appropriate.

ADVISORY: Proper bathing is an essential part of good health. Frequent and proper bathing is recommended and something that should be discussed with your medical provider or healthcare professional.