



## **TECHNICAL MANUAL**

The ***Beauty Bath Personal Hygiene System*** is an accessory device for delivering a waterless body cleansing when mobility or bathing facilities do not allow for a normal bathtub or standing shower cleaning.

We invite people to enjoy Beauty Bath as an experience, a brief holiday of relaxation while cleansing the body. A renewed beauty, from the outside to the inside.

## **CONTENTS**

**Introduction to the Beauty Bath Personal Hygiene System**

**Specifications of the Equipments and Components**

**Parts and Accessories**

**Cleansing and Storage**

**Warranty and Repair**

**Regulations and Certifications**

## 1. Introduction to the Beauty Bath Personal Hygiene System

We are all familiar with the traditional bathing experience. Water, soap or a similar type of cleansing agent, scrubbing the hair and skin to release the dirt and grime, rinsing away the waste with the entire process performed in a containment vessel of some form that holds the clean water and dirty waste water, after which a clean dry towel to blot the clean skin and a splash of our choice of lotions or perfumes to finish off the process.

***Bathing not only refreshes and maintains a clean body but promotes good health.***

As we all know there are times when the home, bathtub or shower is not accessible for bathing. Beauty Bath and the Beauty Bath Personal Hygiene System was designed to allow bathing and personal hygiene at those times, and in those places, when our home or domestic bathtub or shower is not readily accessible.

The Beauty Bath Personal Hygiene System is small, light weight, easy to pack and carry and quickly prepares itself for a bathing experience almost as pleasurable as if you had ready access to your favorite tub or shower.

The Beauty Bath Personal Hygiene System is (1) a container to hold enough ***waterless***, no rinse required, cleaning soap for a full body wash. (2) a warming base that warms the temperature of the cleansing soap to a safe and comfortable 50°C ( 110°F ). (3) A hose to transfer the warm soap from the glass container to (4) a spray nozzle that directs a warm stream of medical grade soap onto the skin or hair so that you can wash away the dirt or grime.

No rinsing is required; so no water is required which means that you can enjoy a Beauty Bath in almost any position and almost any place, even and especially when you do not have fresh water or cannot relocate your body to the tub or shower as you might do so at other times.

## 2. Technical Characteristics & Specifications:

### Electric Heating Base:

Rated voltage: 7.4V

Charging Voltage: DC5V-2A

Lithium battery: 5200mAh

Net Capacity: 500ml

Charging method: USB C

Dimensions:  $\Phi$ 86 X 245mm

Charging times: Normally 1 hour, but variations may occur depending on location, temperature, battery age and charge level at the time of recharging.

### Electric Sprayer Handle:

Power: 3.6V DC, 2000mAh Li-ion

Working pressure: >35PSI

Flow rate: 280~460mm

Working Capacity: 32L when full

### Glass Bottle:

Rated voltage: 7.4V

Charging Voltage: DC5V-2A

Lithium battery: 5200mAh

Net Capacity: 500ml

Charging method: USB C

Dimensions:  $\Phi$ 86 X 245mm

### Plastic Hose:

Power: 3.6V DC, 2000mAh Li-ion

Working pressure: >35PSI

Flow rate: 280~460mm

Working Capacity: 32L when full

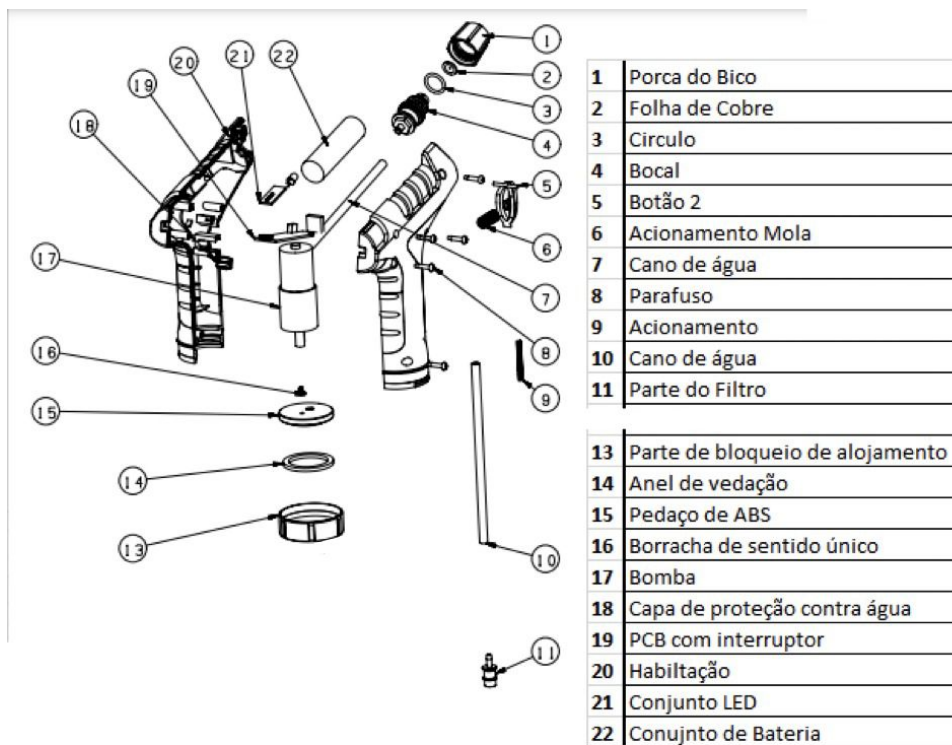
## 2.1. Cautions, Restrictions and Warnings

Attention: Extremely important information to ensure the safety and integrity of the patient, the user and the equipment. Read with attention.

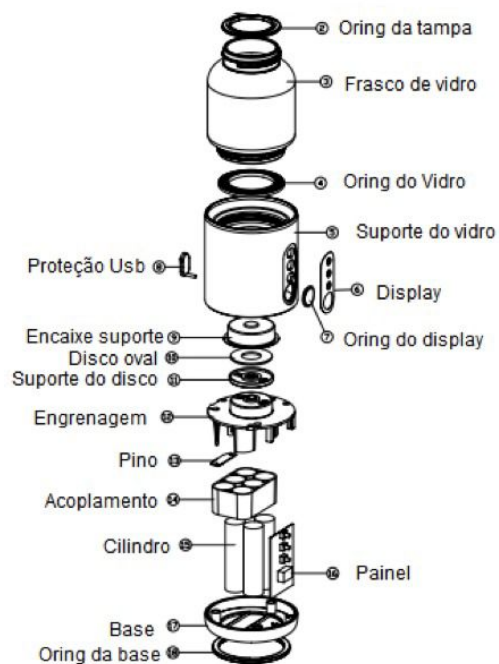
Check and insure that the electrical grid to which the equipment will be connected has characteristics to withstand the electrical conditions of voltage and power of the equipment indicated on the label affixed to the device.

When the equipment is being recharged, it must be connected to a grounded outlet in accordance with local standards and regulations for low-voltage electrical equipment and especially a power grid certified for health care establishments.

## 2.2. Electric Sprayer Parts



## 2.3. Electric Warming Base Parts



### 3. Cleansing and Storage

This section provides cleaning and maintenance instructions. Where necessary, disassembly instructions are provided. Maintenance instructions that are not provided in this technical manual should only be performed by a certified dealer's qualified technical service.

**Attention: To start a maintenance or cleaning procedure, make sure that the Beauty Bath equipment is turned off and any cords or charging accessories are disconnected from electrical outlets .**

It is recommended when the equipment is initially received and when the equipment is in use, that an internal cleaning of the bottle is carried out, using a brush or gentle water jet, just to remove surface dirt. Never use inappropriate chemical products, such as detergents, soaps for cleaning, so as not to run the risk of compromising any component of the equipment.

For a perfect cleaning, we recommend the use of a mild dishwashing soap or alcohol wipe those products help in cleaning the fixed surfaces, does not affect the components of the equipment and fights bacteria.

**Attention: When cleaning and rinsing be careful not to allow an excess of liquid to seep into the electrical circuitry. Even though the device is low voltage and unlikely to cause harm the circuitry could be damaged and prevent future use of the device.**

Regular cleaning is recommended at least at the end of a single individual use or when the cleansing agent in the glass bottle has been complete consumed and needs a refill and absolutely after overnight or long term storage and before the next first use.

Storage of the device, parts, components and disposables should be in a warm dry and secure location to prevent exposure to contaminates, bacteria and other human and medical diseases.

## **In case of Damage**

Inspect each item and notify your local retailer or Beauty Bath if you notice any significant damage. Always take photos to send to the dealer and Beauty Bath to show and document any damage.

## **Warning:**

Before using the equipment it is important to read and understand the user manual in order to avoid malfunction and safety hazards.

Insure that users and bathing attendants are informed of the contents and instructions in the user manual and that this device is operated by a properly trained assistant, medical professional or trained home care assistant.

Insure that the use of this device does not differ from its intended purpose.

Interventions, repairs or alterations to the equipment are to be carried out only by an authorized Beauty Bath service technician.

Use only accessories and components from or approved by the manufacturer.

When a failure is detected in the Beauty Bath equipment, stop using the device, avoiding an overload on the device and harming even more parts and / or parts.

Beauty Bath dealers do not authorize the use of additional accessories or other components, as they may alter the functionality of the equipment, or impair performance.

## **Disposal**

Do not throw electronic devices or parts in the trash when disposing of Beauty Bth equipment, disposables, containers, components or its parts. To promote protection of the global environment, we recommend recycling.



If there is a need to dispose of the equipment, or parts, and they do not have a specific destination defined by the customer, the item in question must be sent under the customer's responsibility for transport, to the manufacturer or its legal representative for the appropriate disposal measures in accordance with local and national legislation.



## **Product, Warranty & Repair Information and Contacts:**

Beauty Bath as a brand name for the purposes of personal hygiene and human cleansing is trademarked and protected under the Laws of the United States of America. 35 U.S.C. §2 and 35 U.S.C. §3 of the *United States Code*.

This manual and any printed materials specifically related to the manufacture, assembly and use of the Beauty Bath Personal Hygiene device is protected under the copyright laws of the United States of America. 15 of Title 17 of the *United States Code*.

Beauty Bath disposables, products and devices are manufactured under license or agreement from Beauty Bath LLC, Carlsbad California 92009 and are protected under appropriate Patent, Trademark and Copyright laws of the *United States Code*.

For warranty issues, repairs, spare parts or any other questions your local distributor or the product source and supplier should be contacted. In lieu of a local or known distributor or supplier a request may be sent to [info@BeautyBath.net](mailto:info@BeautyBath.net) or calling Beauty Bath at +1 (858) 750 9525.

Most product and use information is available on our web site at [www.beautybath.net](http://www.beautybath.net) We encourage everyone to look on our web site for published information before directing your questions to a distributor or to Beauty Bath LLC.

BEAUTY BATH ***will not be responsible*** for any material or physical damage caused by improper assembly, improper use, lack of maintenance, use of non-original parts or unauthorized modifications. Beauty Bath will not accept responsibility for damage or injury from using a third-party product or accessory in combination with this device. Beauty Bath's liability is expressly limited to replacing this device in whole or in part due to manufacturing defects or failure caused by Beauty Bath.

